



65 Richmond Way, Fetcham, Surrey KT22 9NY

£775,000

65 Richmond Way, Fetcham, Surrey KT22 9NY

- A Well Presented Detached Bungalow
- Situated In A Popular Convenient Location
- Four Bedrooms, Two With En-Suites
- Family Bathroom
- Two Reception Rooms
- Superb Kitchen/Breakfast Room
- Double Garage
- Internal Viewing Recommended
- No Onward Chain
- EPC Rating C. Council Tax Band



Corner House, Cross Roads,
Great Bookham, Surrey, KT23 4DF
01372 452207
bookham@patrickgardner.com
www.patrickgardner.com

The Property

This 7 year old detached bungalow offers extremely spacious accommodation (2115 sq ft) and comprises a large entrance hall, triple aspect living room with doors out to the garden, dining room, superb kitchen/breakfast room with integrated appliances and space for a table and a utility room.

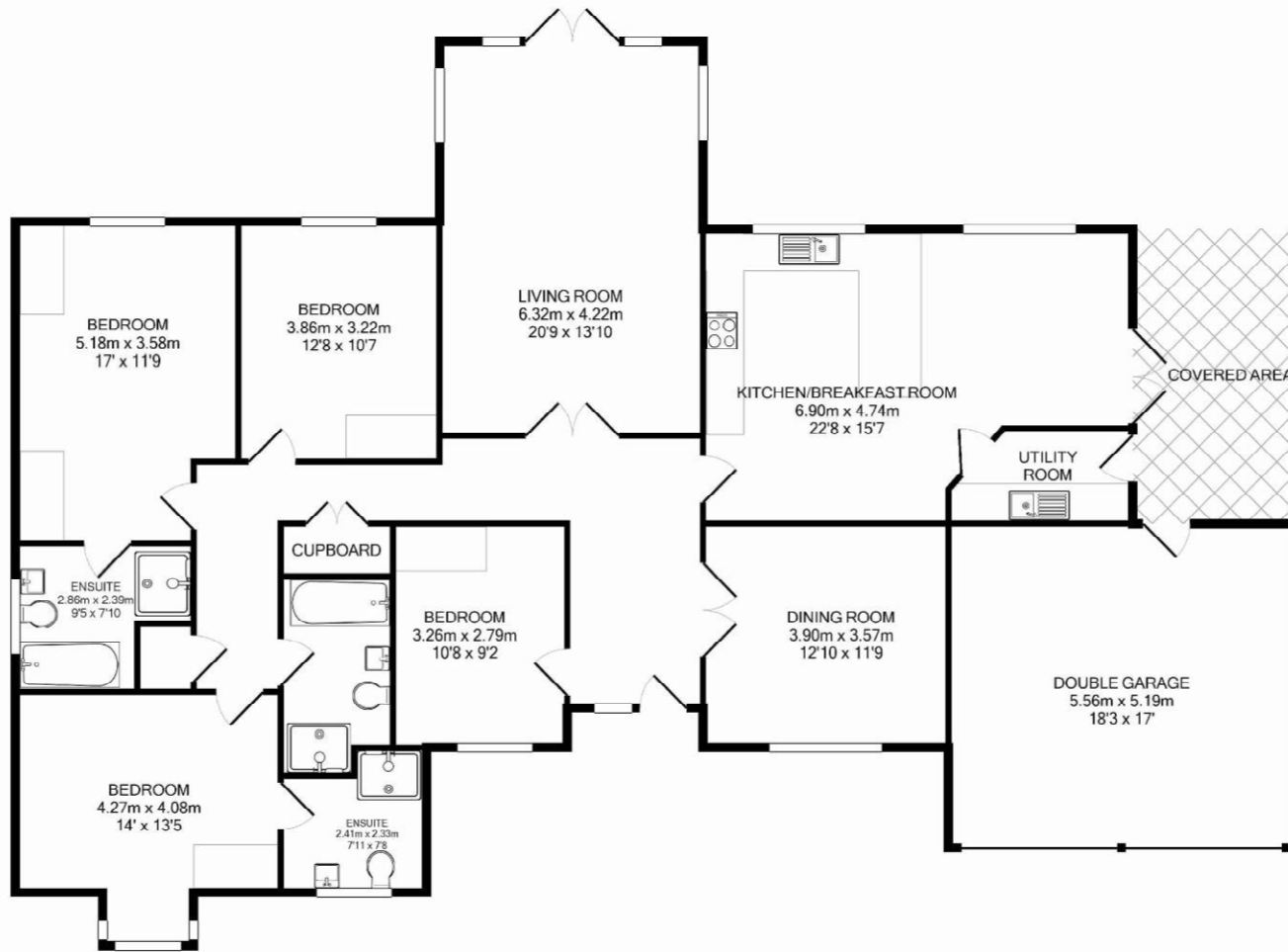
There are four bedrooms, all with built in wardrobes, two en-suite bathrooms and a family bathroom.

Outside there is a double garage with electric up and over doors. Side gated rear access leads to the back garden where the patio extends to give an extensive area with lighting while the rest of the garden is laid to lawn with stocked flower beds and borders. To the side of the property there is hardstanding and a garden shed.

Situation

The property can be found on the right hand side of Richmond Way shortly after turning in from Eastwick Drive. The bungalow sits in a convenient location being just half a mile away from Bookham Village centre. There are a wide variety of shops in the village including a bakers, two butchers, a fishmongers, a greengrocers, a post office, two small supermarkets and several delicatessens and coffee shops.





Total Approx. Floor Area 196.5 Sq.M. (2115 Sq.Ft.)
 Measurements are approximate. Not to scale. Illustrative purposes only
 Made with Metropix ©2013